

Clean Shoes Floor – D

CS- 102N

Manual

* Please kindly read and understand this manual before use of this equipment



Contents

Safety Use	3
Before Use	4
Name of Parts	4
Specification	5
Sensing Range / Control Range	6
How to Use	7
How to Use	7
Maintenance and Administration	8
Suction Time / Consumable	8
Reference	9
Before A/S Notice	9
Guarantee	10

Safety Notice

This notice is to protect user from an unexpected danger and damage while using of this equipment.

Warning / Notice

-  **Warning** If not keep instruction, user could die or may be got seriously injured.
-  **Notice** If not keep Instruction, user may be injured or got damaged.

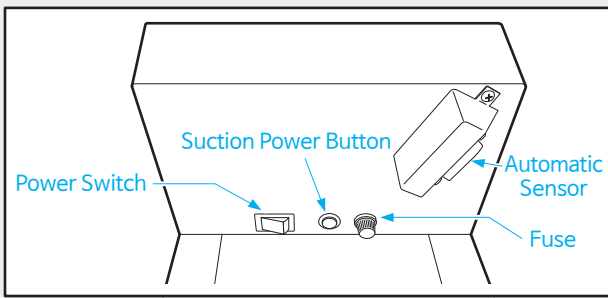
Warning

- ⦿ Do not disassemble or remodel this equipment except an expert repair engineer.
- ⦿ Do not spray an flammable materials including Gasoline, Thinner, etc at the surrounding this equipment and do not also inhale them.
- ⦿ Do not clean and wash this equipment by water.
- ⦿ Do use Socket over 15A separately.
- ⦿ Please make sure the power cord is not pressed by heavy object and is not touched by sharp edge.
- ⦿ Turn off power in advance definitely when the plug is put in or pull out a socket.

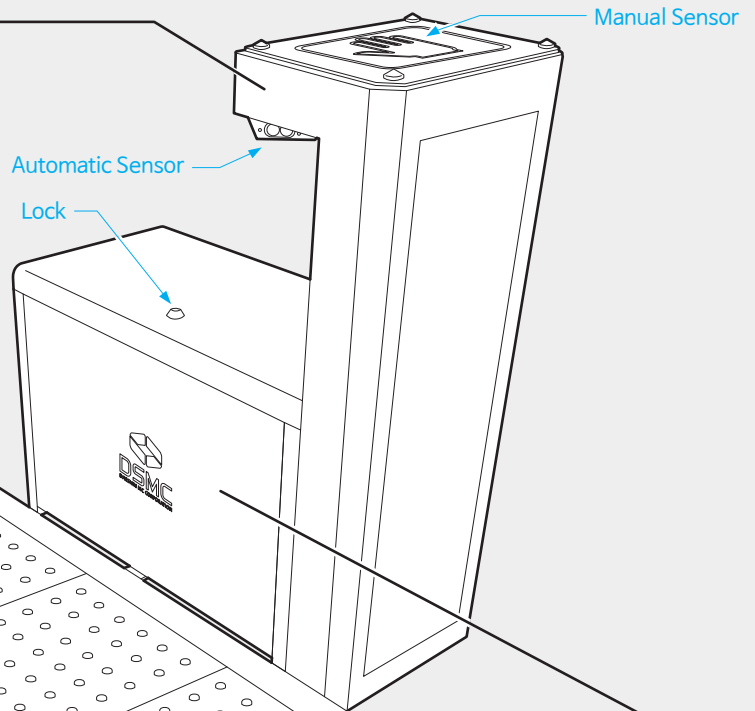
Notice

- ⦿ Do not use this equipment immediately in case of an abnormal operation or some troubles below.
 - This equipment do not operate under switch-on
 - The power is on or off repeatedly when power plug or power code is moved.
 - This equipment is suddenly stopped sometimes while operating.
 - An abnormal or strange sound like a noise happens while operating.
 - The body of the Dust Collector is getting hot abnormally.
 - The hose is damaged.
 - There is a smell of burning.

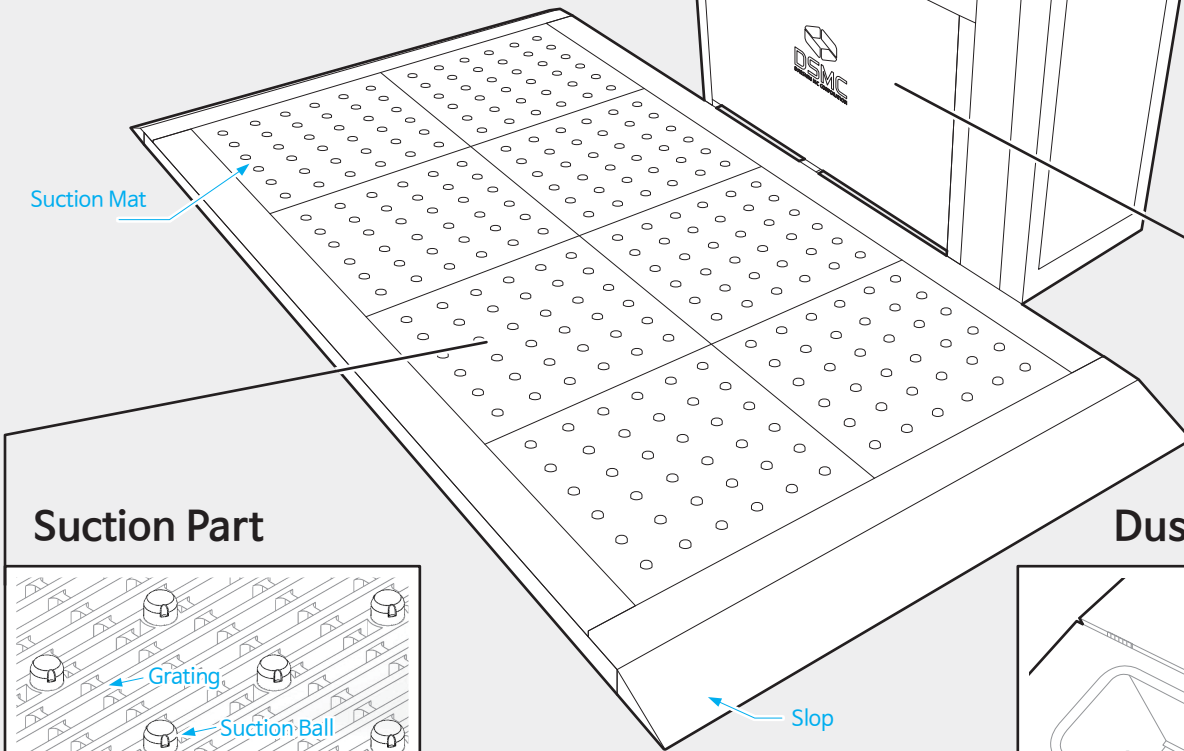
Name of Parts



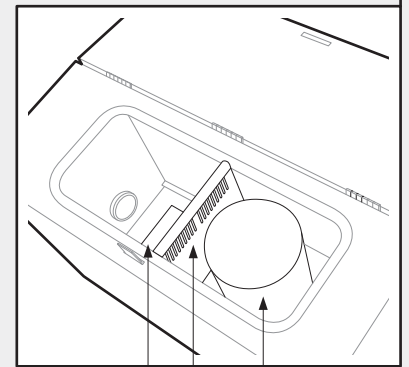
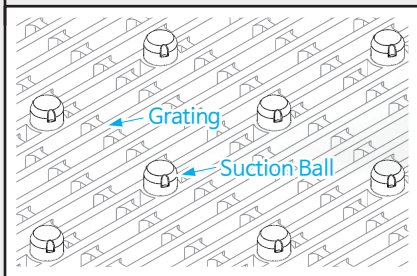
Sensor Part



Dust Collector



Suction Part

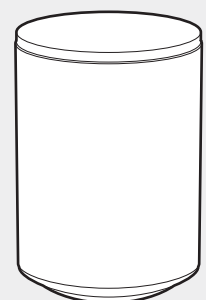
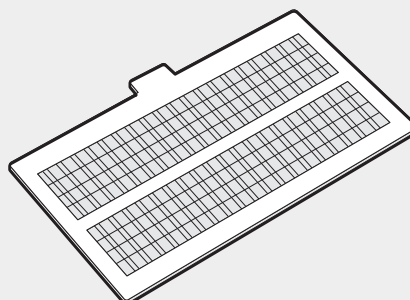
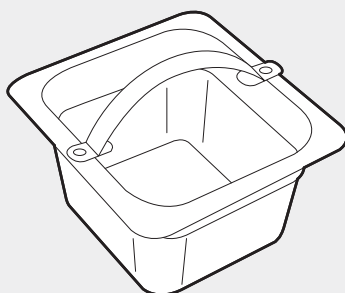


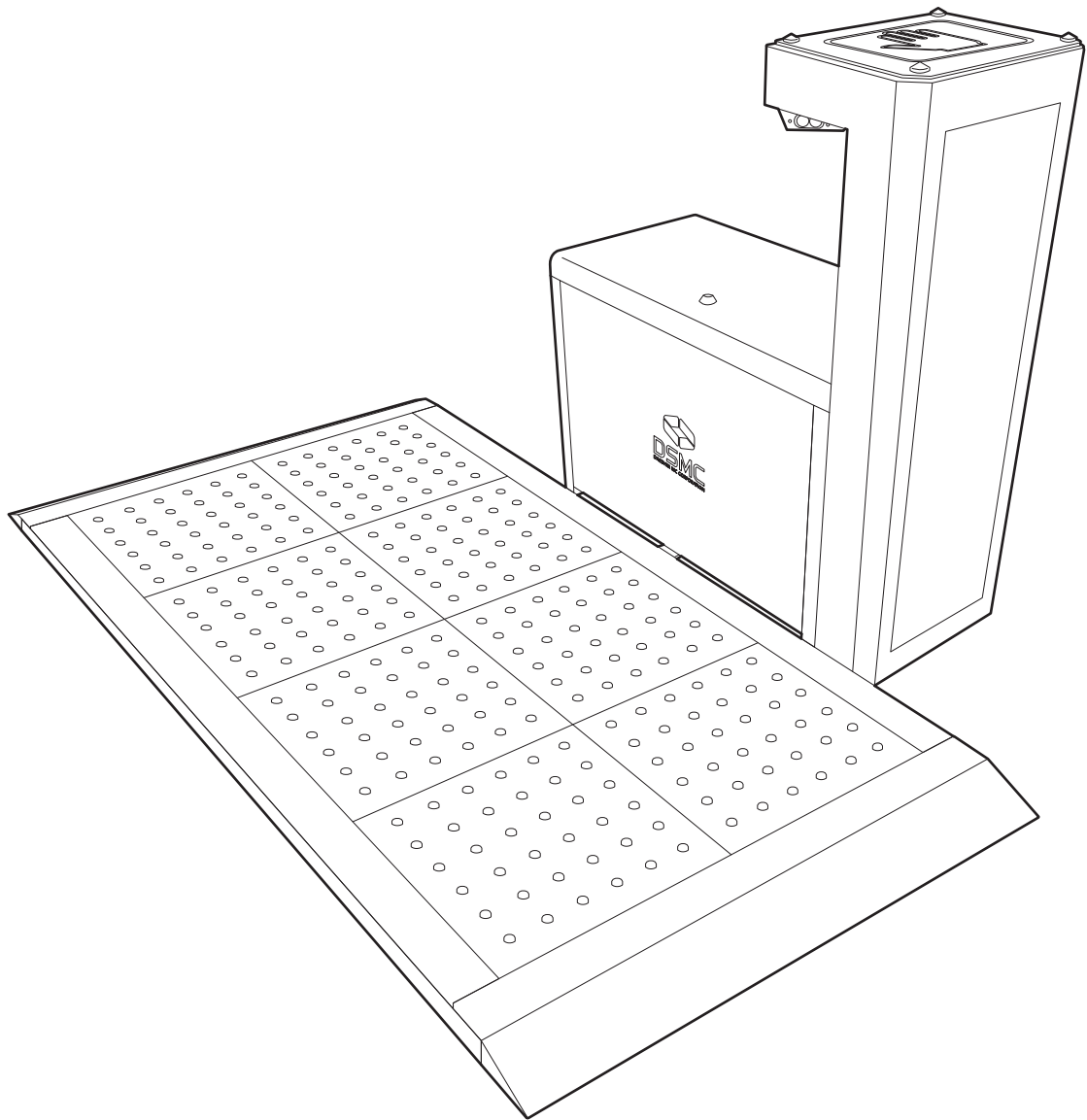
Accessories

Dust Container

Pre-Filter

Uni-Filter

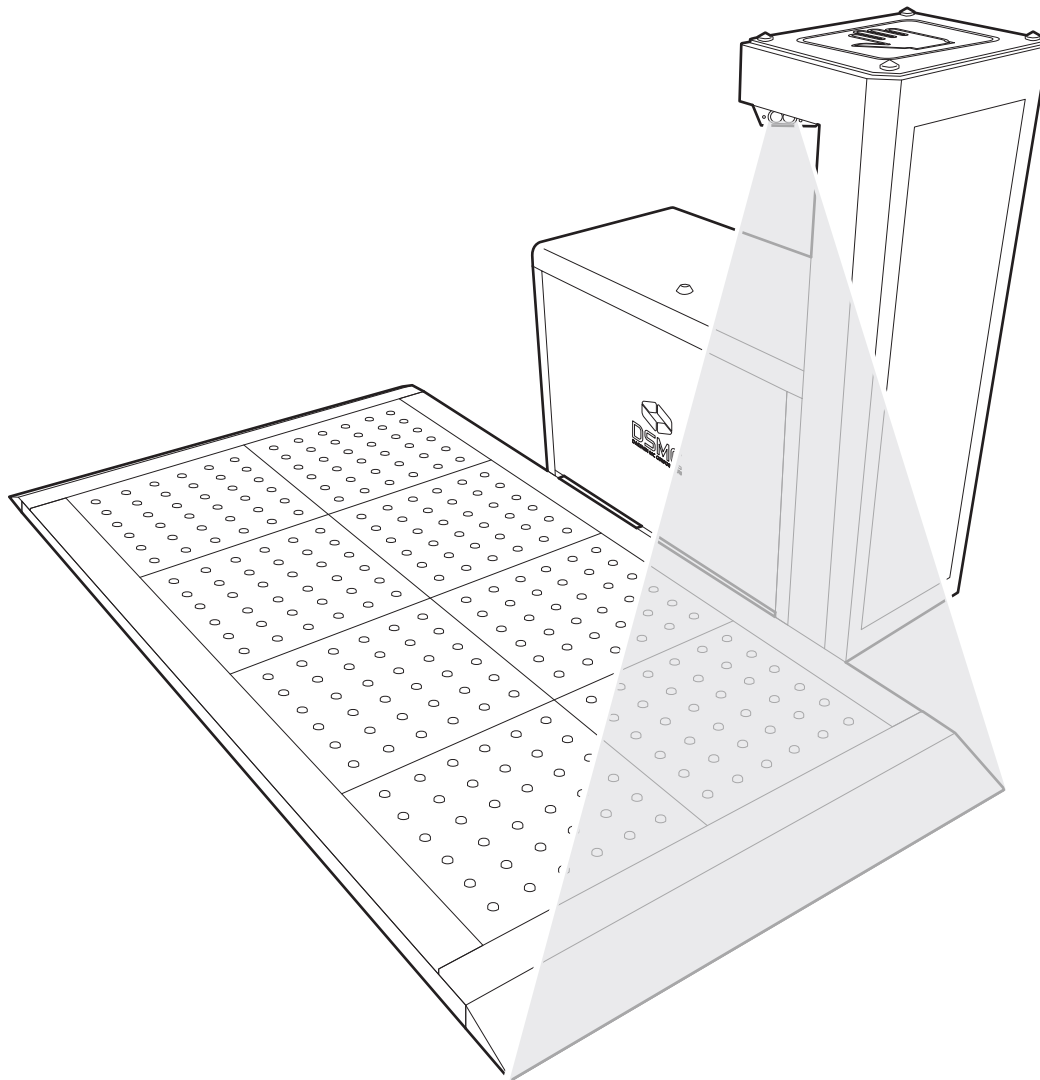




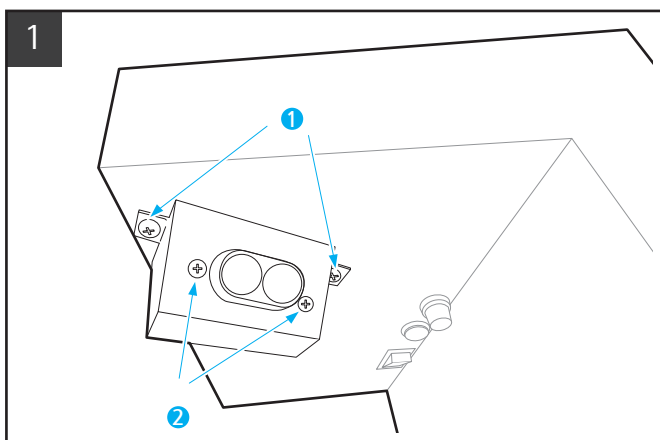
Clean Shoes Floor – D

Manual

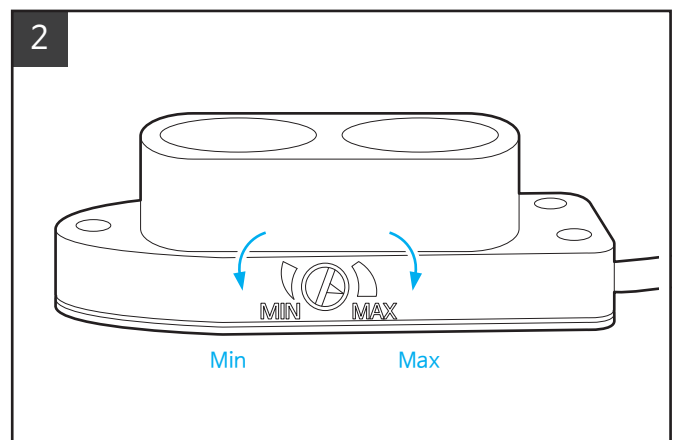
Sensing Range (Automatic Sensor)



Control Range

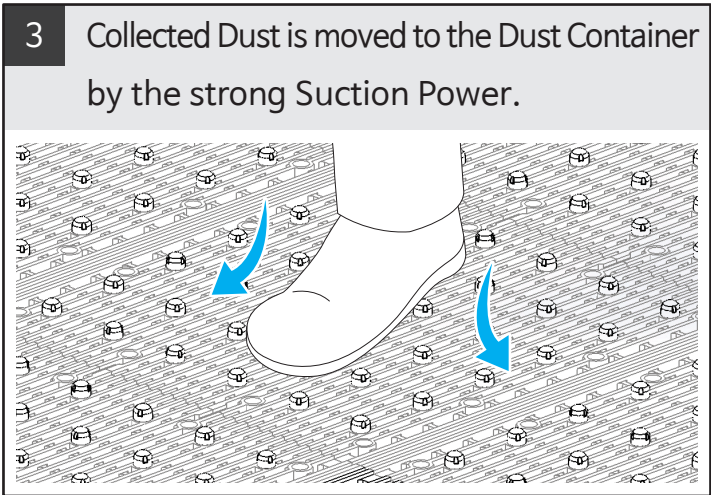
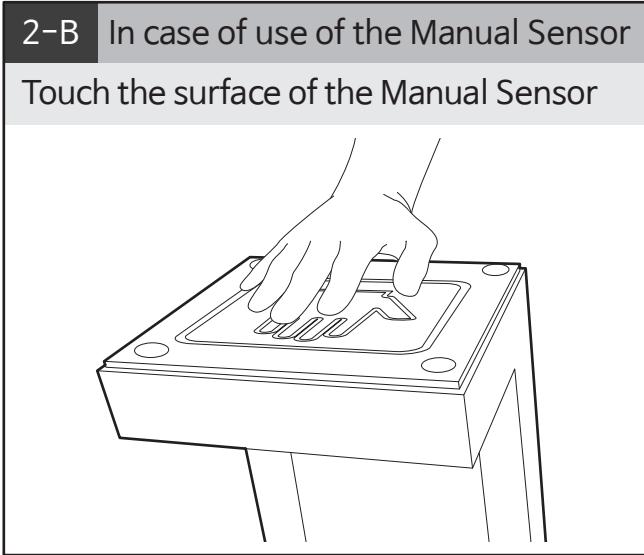
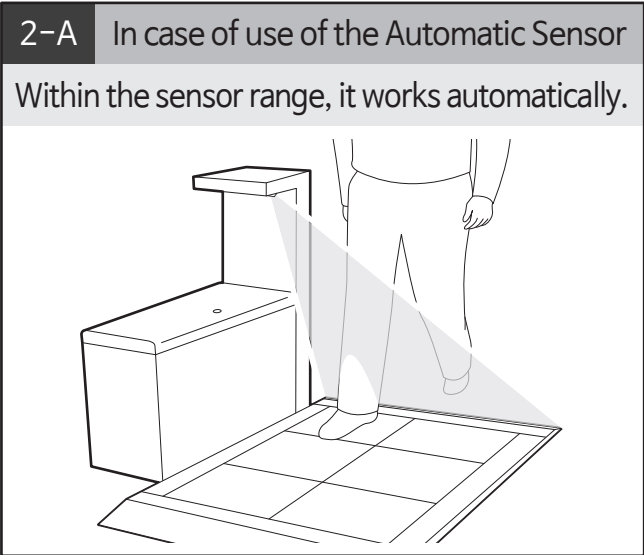
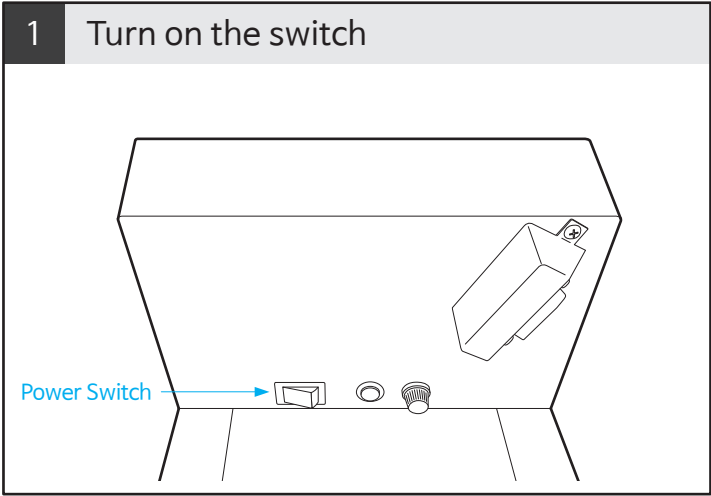


1
Loosen the volts linked automatic sensor bracket with main body (Pic 1) and volts which fixed the sensor at the bracket (Pic 2). (Total 4ea)



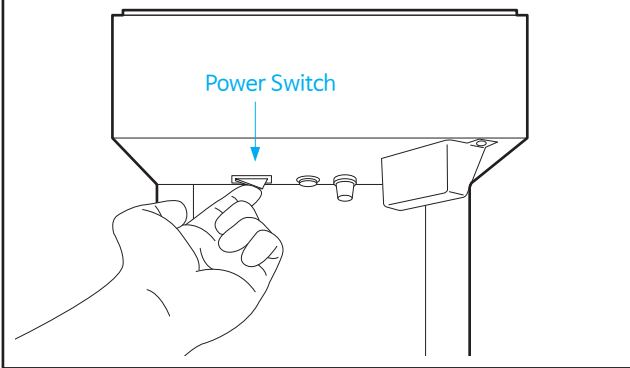
2
Then, adjust the Sensor Range by adjusting the Control Range at the side. (Left: - / Right: +)

How to use

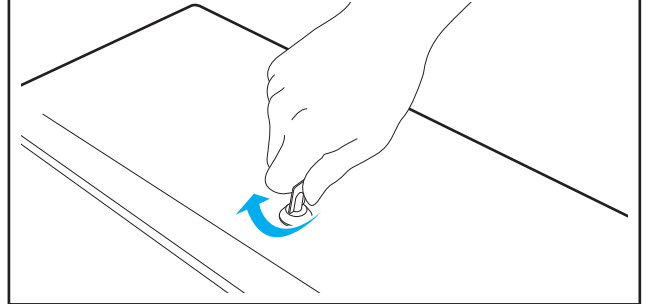


Maintenance

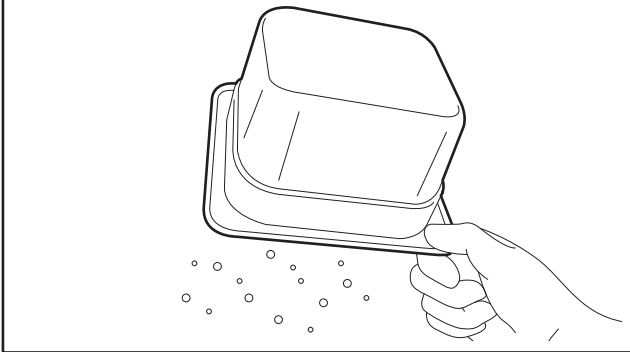
1 Turn off the power.



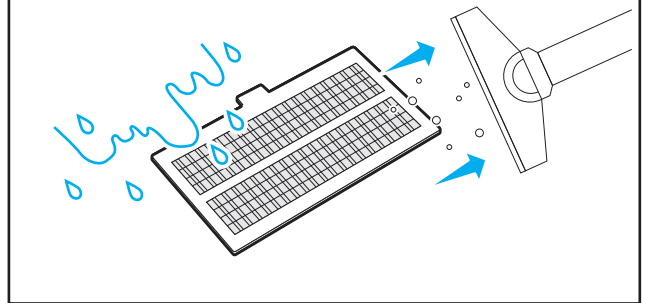
2 Release the lock on the lid of the Dust Collector by using of the enclosed key.



3 Empty the dust in the Dust Container.



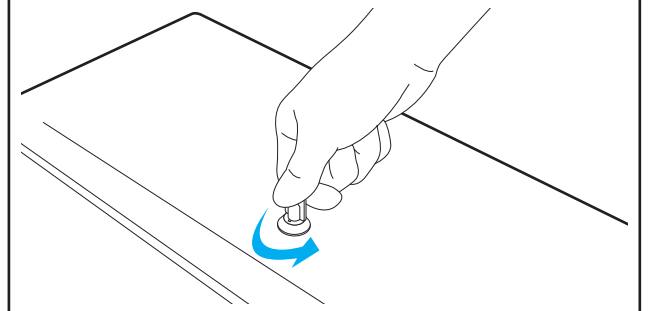
4 Clean and wash the Pre-Filter with water or vacuum cleaner.



5 When the Uni-filter get dirty, strip the outer-filter and change with new one. (Do 2 times, then exchange whole Uni-Filter)



6 Lock the lid of the Dust Collector by using of the key.

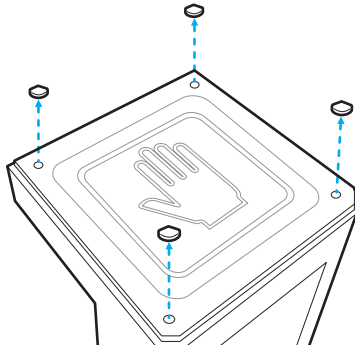


Note

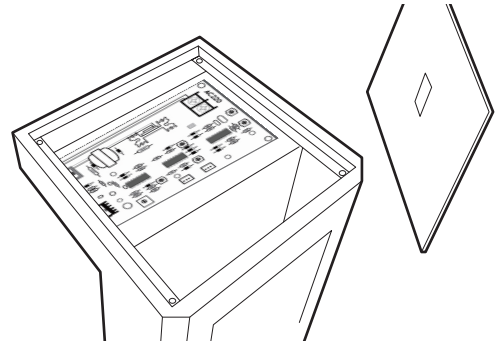
Dust Collector, Pre-filter, and Uni filter need a regular maintenance.

Suction Time

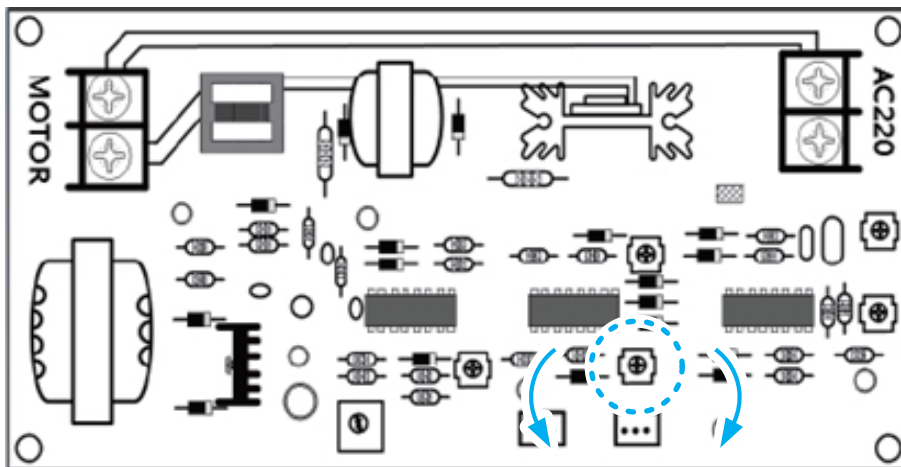
1 Detach the Cover as below picture.



2 Detach the black plate

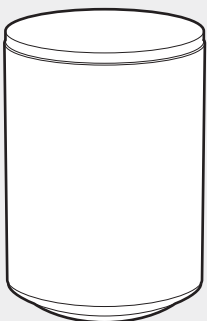


3 Change the Suction Time by adjusting the spot marked with round circle.
Turning left makes suction time short(-) and turning right makes suction time long(+)
Within 0~15sec is available and 5~8sec is the required time.



Time Short(-) Time long(+)

Consumable



Uni-Filter

As oily filter, it is covered with outer filter.

After 2 times of exchange outer filter, check the inner Uni-filter.

If inner Uni-filter got contaminated, exchange whole Uni-Filter.

(Exchange Period : Different per environment/ Normally 1 month)

Before A/S Notice

Problem		Measure
MAIN BODY	No Operation	<ul style="list-style-type: none"> ☞ Check whether the power switch is turned on. ☞ Check whether the power plug is put into the socket.
	Serious Noise	<ul style="list-style-type: none"> ☞ Check the position and location of 3 kinds of parts are proper. - Uni-Filter, Pre-Filter, and Dust Container.
	Lesser suction power and/or serious noise at operation	<ul style="list-style-type: none"> ☞ Check whether both of Filter and Pre-filter are blocked.
HOT	A heated air & body of Dust Collector	<ul style="list-style-type: none"> ☞ Check whether both of Filter and Pre-Filter are blocked. ☞ If yes, no problem. Because, it's a wind after cooling the heated motor.
	A heated plug and power code	<ul style="list-style-type: none"> ☞ Check whether plug is tightly inserted into socket.
AIR INLET	Serious noise from the Suction Mat	<ul style="list-style-type: none"> ☞ Check the Suction Ball (s) on the Suction Mat are now being pressed. If yes, pull it up. ☞ Check dust, sand or such kinds of contaminants & substance are between the suction ball and inlet.
After Operation	Continuous operation even after use.	<ul style="list-style-type: none"> ☞ Check there is any reflective object making malfunction within sensor range.
SMELL	Smell while operation.	<ul style="list-style-type: none"> ☞ Empty or clean the Dust Container. ☞ Because, smells come from the collected dust and contaminant.

Guarantee

Warranty period is one year as from On-Board date of shipment.

Damage caused by Design and Production within this period can be serviced free of charge.

But, the compensation range is limited to only repairing and 2nd damage caused by a mechanical trouble is beyond this warranty.

- (1) Damage caused by user's carelessness as for the operation and/or Safety Notice at this Manual.
- (2) Damage caused by the unexpected natural disaster including thunderstroke, fire, storm & flood, earthquake, etc.
- (3) Disassembly and Re-modeling of this equipment at user's disposal.
- (4) Damage caused by user's carelessness as for the working voltage.

Memo